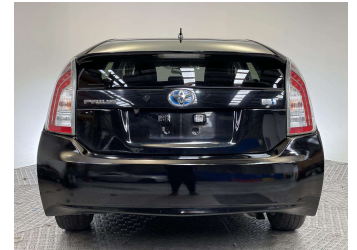
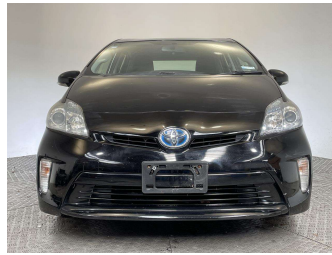


2013 Toyota Prius Hybrid



Purchase Price

Includes GST, Registration & Licensing

\$8,500

Indicative repayments

\$44.13 per week*

Based on a 60 month term & no deposit.
Total repayments (260) = **\$11,472.86**

Gain peace of mind with
Mechanical Breakdown
Insurance. **Ask us how.**

Top features

- » Air Conditioning
- » Alloy wheels
- » Central Locking
- » Digital Display
- » Double Din Stereo
- » ECO MODE
- » Electric Mirrors
- » Electric windows
- » EV mode
- » EVWS (Electric Vehicle...)
- » Fog Lights
- » HSD (Hybrid Synergy Dr...)
- » Push Start
- » Rear Wiper
- » Recliner Seats
- » Remote key
- » Reversing Camera
- » Seat Lifter

Body Style
4 door, Hatchback

Odometer
196,648 km

Engine
1797 cc, Internal Combustion

Fuel Type
Hybrid

Transmission
CVT, Front Wheel

Wheels
15", Factory Alloys

VIN
7AT0H637X18708471

Interior
Black, Cloth

Safety



Based on 2023 UCSR rating
for 09-16 models

Reg No.
-

Ext Colour
Black

History
-

Seats
5 seats, Cloth

CO2 Emissions
★ ★ ★ ★ ☆
94 grams/km

Energy Economy
★ ★ ★ ★ ☆ ☆
Annual fuel cost of \$1,570
4L per 100km

Cost per year is an estimate based
on petrol price of \$2.80 per litre and
an average distance of 14000 km.
Emissions and Energy Economy
figures standardised to 3P WLTP.

Stock ID: 23423



0800 Best Deal Cars | Phone 0800 237 833 | Email sales@0800bestdeal.co.nz
53 Princes Street, Onehunga, Auckland, New Zealand
www.0800bestdeal.co.nz

* 0800 Best Deal Cars is not a lender nor a financial adviser. Any amounts displayed should not be seen as an offer of finance or taken as financial advice. The interest rate, fees and loan term used in this calculation may not actually represent those available from lenders. Actual interest rates, fees and loan terms will vary per lender and are typically based on an assessment of your credit risk and responsible lending criteria. Any repayment amounts displayed are indicative only and have been calculated using several other indicative inputs. The interest rate used in this calculation is an arbitrary 9.95%, however exact interest rates vary per lender. The term of the loan used in this calculation is 60 month. Exact terms available vary per lender although options typically include 6, 12, 18, 24, 36, 48 and 60 months. This calculation also includes a typical mandatory fee charged by lenders. This is a one-off establishment fee of \$510.00. Typically, this fee can be paid upfront or, as in this calculation, be capitalised over the contract term, ie. included in the loan amount. This fee can vary per lender and other non-mandatory fees and charges may also apply. The total amount of repayments has been calculated by multiplying 260 weekly repayments (based on a 60 month term) by the weekly repayment amount of \$44.13 which equals \$11,472.86. This calculator does not consider any of your own personal circumstances and we strongly suggest you seek budgeting advice prior to committing to any loan contract. Responsible lending criteria and lender terms and conditions will likely apply to any finalised loan contract. Proof of security and/or vehicle insurance may also be required before proceeding.