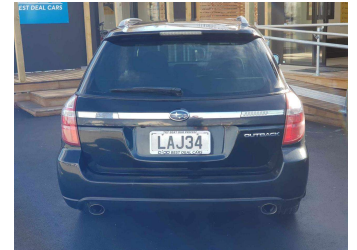
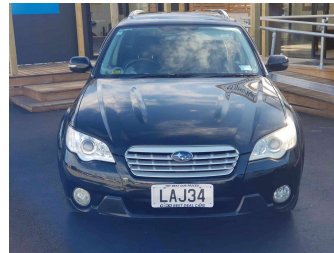


2006 Subaru Legacy Outback



Purchase Price

\$6,990

Includes GST, Registration & Licensing

Indicative repayments

\$36.73 per week*

Based on a 60 month term & no deposit.
Total repayments (260) = **\$9,550.1**

Gain peace of mind with
Mechanical Breakdown
Insurance. **Ask us how.**

Top features

- » Air Conditioning
- » Alloy wheels
- » Cassette Player
- » CD Player
- » Central Locking
- » Child seat anchor poin...
- » Cup holders
- » Drives electric seat
- » Electric Mirrors (Retr...
- » Electric windows
- » Fog Lights
- » Luggage cover
- » Rear Wiper
- » Remote key
- » Roof Rails
- » Seat Lifter
- » Tinted Windows
- » Twin Exhaust

Body Style

5 door, Station Wagon

Odometer

163,257 km

Engine

2457 cc, Internal Combustion

Fuel Type

Petrol

Transmission

Automatic, AWD

Wheels

-

VIN

7AT0GF0BX17043674

Interior

Black

Safety



Based on 2023 UCSR rating
for 03-09 models

Reg No.

LAJ34

Ext Colour

Black

History

-

Seats

5 seats

CO2 Emissions

★ ★ ★ ☆ ☆ ☆

213 grams/km

Energy Economy

★ ★ ☆ ☆ ☆ ☆

Annual fuel cost of \$3,490
8.9L per 100km

Cost per year is an estimate based
on petrol price of \$2.80 per litre and
an average distance of 14000 km.
Emissions and Energy Economy
figures standardised to 3P WLTP.

Stock ID: 23164



0800 Best Deal Cars | Phone 0800 237 833 | Email sales@0800bestdeal.co.nz
46B Belfast Road, Belfast, Christchurch 8051, New Zealand
www.0800bestdeal.co.nz

* 0800 Best Deal Cars is not a lender nor a financial adviser. Any amounts displayed should not be seen as an offer of finance or taken as financial advice. The interest rate, fees and loan term used in this calculation may not actually represent those available from lenders. Actual interest rates, fees and loan terms will vary per lender and are typically based on an assessment of your credit risk and responsible lending criteria. Any repayment amounts displayed are indicative only and have been calculated using several other indicative inputs. The interest rate used in this calculation is an arbitrary 9.95%, however exact interest rates vary per lender. The term of the loan used in this calculation is 60 month. Exact terms available vary per lender although options typically include 6, 12, 18, 24, 36, 48 and 60 months. This calculation also includes a typical mandatory fee charged by lenders. This is a one-off establishment fee of \$510.00. Typically, this fee can be paid upfront or, as in this calculation, be capitalised over the contract term, ie. included in the loan amount. This fee can vary per lender and other non-mandatory fees and charges may also apply. The total amount of repayments has been calculated by multiplying 260 weekly repayments (based on a 60 month term) by the weekly repayment amount of \$36.73 which equals \$9,550.10. This calculator does not consider any of your own personal circumstances and we strongly suggest you seek budgeting advice prior to committing to any loan contract. Responsible lending criteria and lender terms and conditions will likely apply to any finalised loan contract. Proof of security and/or vehicle insurance may also be required before proceeding.

Generated 18 June 2024 10:05