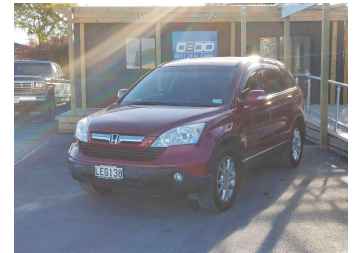
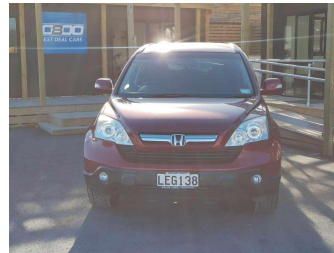
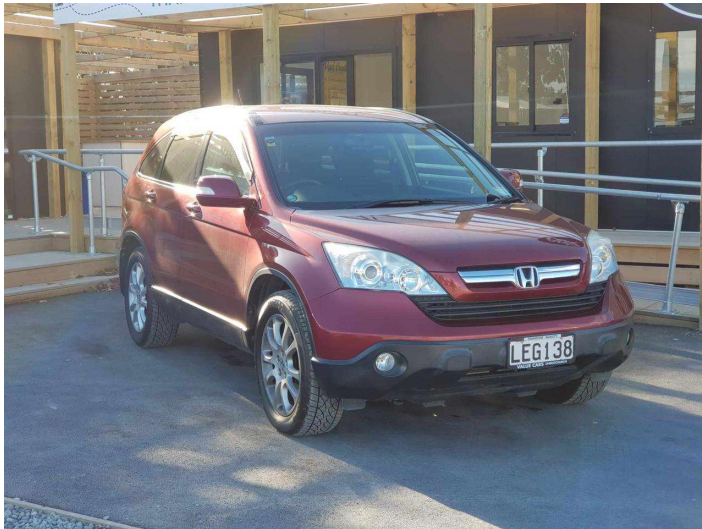


2008 Honda CR-V



Purchase Price

\$8,990

Includes GST, Registration & Licensing

Indicative repayments

\$46.53 per week*

Based on a 60 month term & no deposit.
Total repayments (260) = **\$12,096.8**

Gain peace of mind with
Mechanical Breakdown
Insurance. **Ask us how.**

Top features

- » Air Conditioning
- » Alloy wheels
- » CD Player
- » Central Locking
- » Child seat anchor poin...
- » Cup holders
- » Electric Mirrors (Retr...
- » Electric windows
- » Fog Lights
- » I-VTEC
- » Monsoon Breakers
- » Rear Wiper
- » Remote key
- » Roof Rails
- » Seat Lifter
- » Spare key
- » Tow Bar
- » USB port

Body Style

5 door, SUV

Odometer

114,050 km

Engine

2350 cc, Internal Combustion

Fuel Type

Petrol

Transmission

Automatic

Wheels

-

VIN

7AT08G7HX17103082

Interior

Black, Leather

Safety



Based on 2023 UCSR rating
for 07-12 models

Reg No.

LEG138

Ext Colour

Red

History

-

Seats

5 seats, Leather

CO2 Emissions

★ ★ ★ ☆ ☆ ☆

229 grams/km

Energy Economy

★ ★ ☆ ☆ ☆ ☆

**Annual fuel cost of \$3,760
9.6L per 100km**

Cost per year is an estimate based
on petrol price of \$2.80 per litre and
an average distance of 14000 km.
Emissions and Energy Economy
figures standardised to 3P WLTP.

Stock ID: 22977



0800 Best Deal Cars | Phone 0800 237 833 | Email sales@0800bestdeal.co.nz
46B Belfast Road, Belfast, Christchurch 8051, New Zealand
www.0800bestdeal.co.nz

* 0800 Best Deal Cars is not a lender nor a financial adviser. Any amounts displayed should not be seen as an offer of finance or taken as financial advice. The interest rate, fees and loan term used in this calculation may not actually represent those available from lenders. Actual interest rates, fees and loan terms will vary per lender and are typically based on an assessment of your credit risk and responsible lending criteria. Any repayment amounts displayed are indicative only and have been calculated using several other indicative inputs. The interest rate used in this calculation is an arbitrary 9.95%, however exact interest rates vary per lender. The term of the loan used in this calculation is 60 months. Exact terms available vary per lender although options typically include 6, 12, 18, 24, 36, 48 and 60 months. This calculation also includes a typical mandatory fee charged by lenders. This is a one-off establishment fee of \$510.00. Typically, this fee can be paid upfront or, as in this calculation, be capitalised over the contract term, ie. included in the loan amount. This fee can vary per lender and other non-mandatory fees and charges may also apply. The total amount of repayments has been calculated by multiplying 260 weekly repayments (based on a 60 month term) by the weekly repayment amount of \$46.53 which equals \$12,096.80. This calculator does not consider any of your own personal circumstances and we strongly suggest you seek budgeting advice prior to committing to any loan contract. Responsible lending criteria and lender terms and conditions will likely apply to any finalised loan contract. Proof of security and/or vehicle insurance may also be required before proceeding.

Generated 03 May 2024 17:18