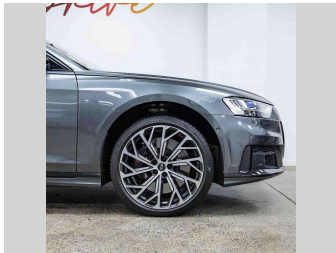
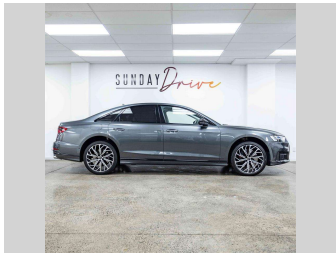


# 2020 Audi S8



Car finance  
for car lovers,  
by car lovers

GET PRE-APPROVED

Buy from Sunday Drive  
or anywhere nationwide

FIXED INTEREST RATES

That means no hidden rate  
ranges, and no surprises

NO DEPOSIT FINANCE

Secure finance. No deposit.  
Get the car you're dreaming of

FAST RESPONSE

Online application in minutes.  
Lending decisions in three hours

SUNDAY Drive

POWERED BY  
better

Car  
finance  
+ expert  
car-buying  
advice

GET PRE-APPROVED

Buy from Sunday Drive  
or anywhere nationwide

INSPECTIONS

Assistance with  
vehicle inspections

EXCLUSIVE STOCK

Access to the Sunday Drive  
unadvertised stock database

SIMPLE TRADES

Trade-in valuation  
and placements

CLICK ON

Finance estimate more info  
BELOW TO APPLY NOW

SUNDAY Drive

POWERED BY  
better

Purchase Price

\$164,990

Includes GST, Registration & Licensing

Indicative repayments

\$569.92 per week\*

Based on a 60 month term & 30% deposit.  
Total repayments (260) = \$197,675.38

UDC

New Zealand's Finance Company

Gain peace of mind with  
Mechanical Breakdown  
Insurance. Ask us how.

autosure

INSURANCE

Top features

None Listed

Body Style

4 door, Sedan

Odometer

30,850 km

Engine

3996 cc, Internal Combustion

Fuel Type

Petrol

Transmission

Automatic, 4WD

Wheels

-

VIN

WAUZZZF80MN004604

Interior

-

Safety

5 star  
safety rating

Based on 2023 VSRR rating

Reg No.

NGN163

Ex Colour

Grey

History

Ex-Overseas, 1 owner

Seats

5 seats

CO2 Emissions

★ ★ ☆ ☆ ☆ ☆

245 grams/km

Energy Economy

★ ☆ ☆ ☆ ☆ ☆

Annual fuel cost of \$4,190

Cost per year is an estimate based  
on petrol price of \$2.80 per litre and  
an average distance of 14000 km.  
Emissions and Energy Economy  
figures standardised to 3P WLTP.

Stock ID: 8966



Sunday Consignment | Email [consignment@sundaydrive.co.nz](mailto:consignment@sundaydrive.co.nz)  
363 Church Street, Penrose, Auckland 1061, New Zealand  
[www.sundaydrive.co.nz](http://www.sundaydrive.co.nz)

\* Sunday Consignment is not a lender nor a financial adviser. Any amounts displayed should not be seen as an offer of finance or taken as financial advice. The interest rate, fees and loan term used in this calculation may not actually represent those available from lenders. Actual interest rates, fees and loan terms will vary per lender and are typically based on an assessment of your credit risk and responsible lending criteria. Any repayment amounts displayed are indicative only and have been calculated using several other indicative inputs. The interest rate used in this calculation is an arbitrary 9.95%, however exact interest rates vary per lender. The term of the loan used in this calculation is 60 months. Exact terms available vary per lender although options typically include 6, 12, 18, 24, 36, 48 and 60 months. This calculation also includes two typical mandatory fees charged by lenders. These are an account admin fee of \$10.00 per month (other payment frequencies may be available) and a one-off establishment fee of \$405.00. Typically, this fee can be paid upfront or, as in this calculation, be capitalised over the contract term, ie. included in the loan amount. These fees can vary per lender and other non-mandatory fees and charges may also apply. The total amount of repayments has been calculated by multiplying 260 weekly repayments (based on a 60 month term) by the weekly repayment amount of \$569.92 which equals \$197,675.38. This calculator does not consider any of your own personal circumstances and we strongly suggest you seek budgeting advice prior to committing to any loan contract. Responsible lending criteria and lender terms and conditions will likely apply to any finalised loan contract. Proof of security and/or vehicle insurance may also be required before proceeding.