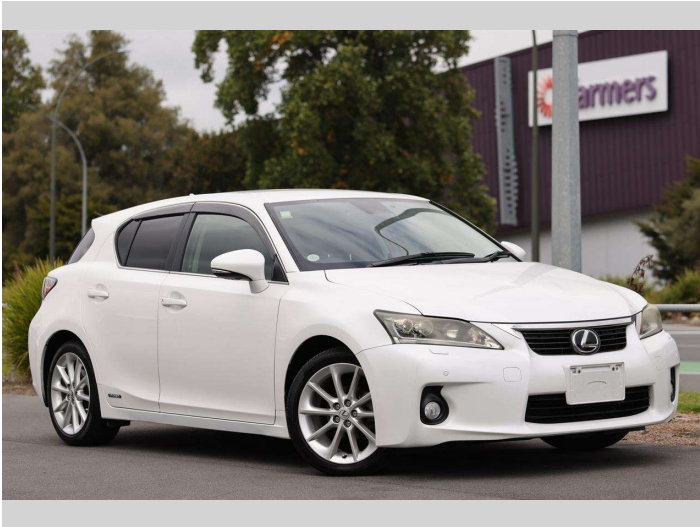


2011 Lexus CT200 H



Purchase Price

\$16,997

Includes GST
Excludes on-road costs of \$350

Finance may be available on this vehicle. Ask one of our friendly staff for more information.

finance
NOW

Gain peace of mind with Mechanical Breakdown Insurance. **Ask us how.**



Top features

None Listed

Body Style

5 door, Hatchback

Odometer

126,490 km

Engine

1800 cc, Hybrid

Fuel Type

Hybrid

Transmission

Auto, 2WD

Wheels

-

VIN

7AT0B010X24027720

Interior

-

Safety



Based on 2023 VSRR rating

Reg No.

-

Ext Colour

White

History

-

Seats

-

CO2 Emissions

★★★★★☆☆

109 grams/km

Energy Economy

★★★★☆☆☆☆

Annual fuel cost of \$1,840

4.7L per 100km

Cost per year is an estimate based on petrol price of \$2.80 per litre and an average distance of 14000 km. Emissions and Energy Economy figures standardised to 3P WLTP.

Stock ID: 18002



Royale Cars & Motorcycles | Phone 07 846 6622 | Email sales@royalecars.co.nz
860 Te Rapa Road, Pukete, Hamilton 3288, New Zealand
www.royalecars.co.nz



★★★★★
4.78 | 113 reviews