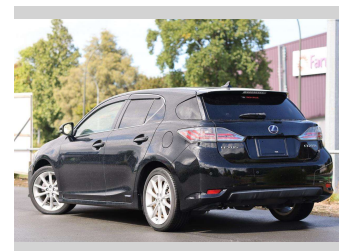
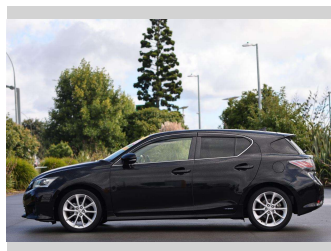
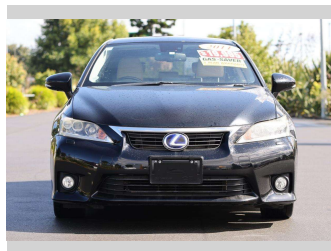



# 2011 Lexus CT200



**Purchase Price** **\$17,997**

Includes GST  
Excludes on-road costs of \$350

Finance may be available on this vehicle. Ask one of our friendly staff for more information.



Gain peace of mind with Mechanical Breakdown Insurance. **Ask us how.**



**Top features**

None Listed

Body Style  
**5 door, Hatchback**

Odometer  
**86,372 km**

Engine  
**1800 cc, Hybrid**

Fuel Type  
**Petrol**

Transmission  
**Auto, 2WD**

Wheels  
-

VIN  
-

Interior  
**Beige, Leather**

Safety



Based on 2023 VSRR rating

Reg No.  
-

Ext Colour  
**Black**

History  
-

Seats  
**5 seats, Leather**

CO2 Emissions  
**★★★★☆**  
**109 grams/km**

Energy Economy  
**★★★★☆☆**


**Annual fuel cost of \$1,840**  
**4.7L per 100km**

Cost per year is an estimate based on petrol price of \$2.80 per litre and an average distance of 14000 km. Emissions and Energy Economy figures standardised to 3P WLTP.

**Stock ID: 17731**



Royale Cars & Motorcycles | Phone 07 846 6622 | Email sales@royalecars.co.nz  
860 Te Rapa Road, Pukete, Hamilton 3288, New Zealand  
www.royalecars.co.nz



★★★★★  
4.78 | 113 reviews