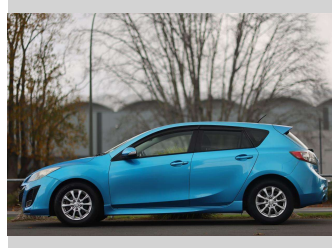
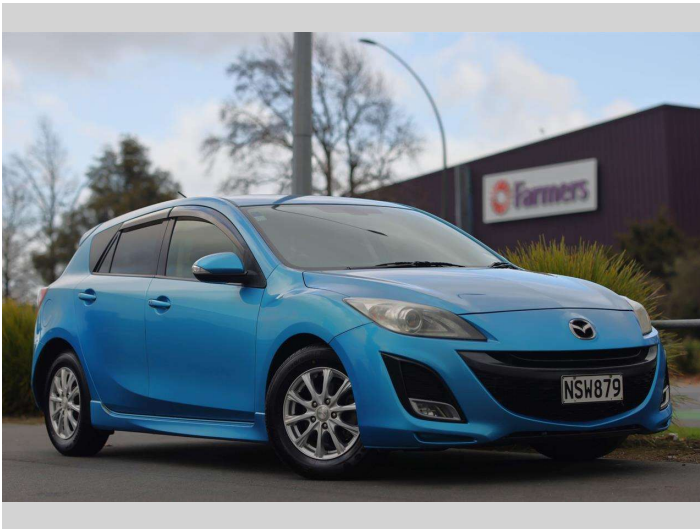


2010 Mazda Axela



Purchase Price

\$13,997

Includes GST, Registration & Licensing

Finance may be available on this vehicle. Ask one of our friendly staff for more information.

finance
NOW

Gain peace of mind with Mechanical Breakdown Insurance. **Ask us how.**



Top features

None Listed

Body Style

5 door, Hatchback

Odometer

159,538 km

Engine

2000 cc, Internal Combustion

Fuel Type

Petrol

Transmission

Auto, 2WD

Wheels

-

VIN

7AT0C13JX2111060

Interior

Black, Fabric

Safety



Based on 2023 UCSR rating for 09-13 models

Reg No.

NSW879

Ext Colour

Blue

History

-

Seats

5 seats, Fabric

CO2 Emissions

★★★★☆

183 grams/km

Energy Economy

★★☆☆☆

Annual fuel cost of \$2,980

7.6L per 100km

Cost per year is an estimate based on petrol price of \$2.80 per litre and an average distance of 14000 km. Emissions and Energy Economy figures standardised to 3P WLTP.

Stock ID: 18300



Royale Cars & Motorcycles | Phone 07 846 6622 | Email sales@royalecars.co.nz
860 Te Rapa Road, Pukete, Hamilton 3288, New Zealand
www.royalecars.co.nz



★★★★★
4.78 | 113 reviews