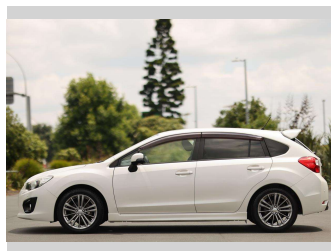
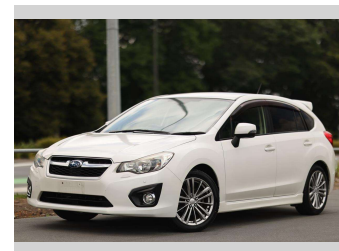
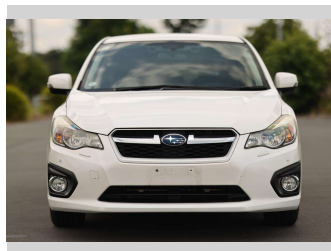
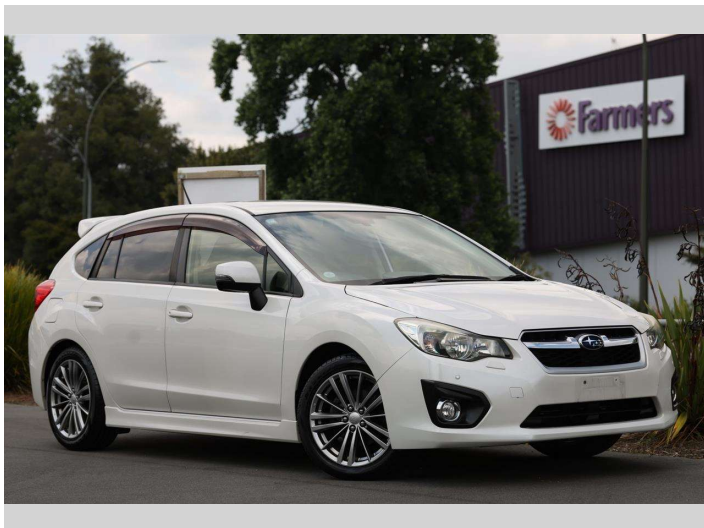


# 2012 Subaru Impreza 2.0i



Purchase Price

**\$15,997**

Includes GST  
Excludes on-road costs of \$350

Note: A Clean Car fee or rebate may apply to this vehicle

Finance may be available on this vehicle. Ask one of our friendly staff for more information.

finance  
**NOW**

Gain peace of mind with Mechanical Breakdown Insurance. **Ask us how.**



## Top features

» All Electrics

Body Style

**5 door, Hatchback**

Odometer

**113,624 km**

Engine

**2000 cc, Internal Combustion**

Fuel Type

**Petrol**

Transmission

**Auto**

Wheels

-

VIN

**7AT0GF09X23009481**

Interior

**Black, Leather**

Safety



Based on 2023 UCSR rating for 12-16 models

Reg No.

-

Ext Colour

**Yellow**

History

-

Seats

**5 seats, Fabric**

CO2 Emissions

★★★★☆

**163 grams/km**

Energy Economy

★★★☆☆

**Annual fuel cost of \$2,740  
7L per 100km**

Cost per year is an estimate based on petrol price of \$2.80 per litre and an average distance of 14000 km. Emissions and Energy Economy figures standardised to 3P WLTP.

**Stock ID: 17728**



Royale Cars & Motorcycles | Phone 07 846 6622 | Email sales@royalecars.co.nz  
860 Te Rapa Road, Pukete, Hamilton 3288, New Zealand  
www.royalecars.co.nz



★★★★★  
4.78 | 113 reviews