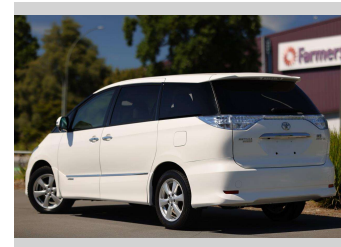
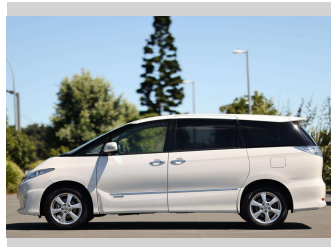
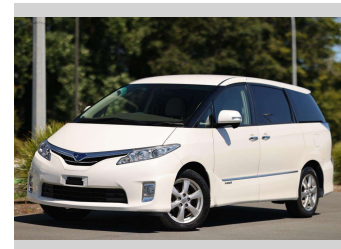
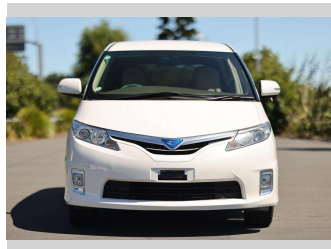
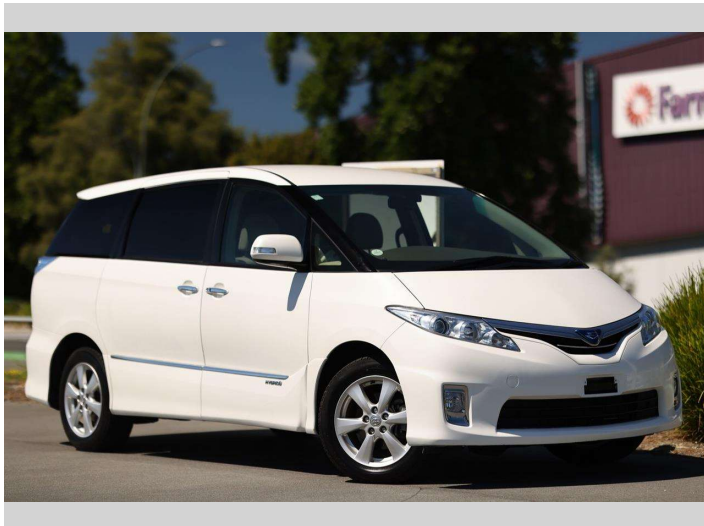


2009 Toyota Estima Hybrid 4WD



Purchase Price **\$19,997**

Includes GST
Excludes on-road costs of \$350

Finance may be available on this vehicle. Ask one of our friendly staff for more information.



Gain peace of mind with Mechanical Breakdown Insurance. **Ask us how.**



Top features

None Listed

Body Style
5 door, Van

Odometer
84,296 km

Engine
2400 cc, Hybrid

Fuel Type
Petrol


Transmission
Auto, All Wheel Drive

Wheels
-

VIN
7AT0H61YX23041008

Interior
Black, Leather

Safety



Based on 2023 UCSR rating for 06-19 models

Reg No.
-

Ext Colour
White

History
-

Seats
7 seats, Fabric

CO2 Emissions
★★★★☆
150 grams/km



Energy Economy
★★★★☆☆
Annual fuel cost of \$2,550
6.5L per 100km

Cost per year is an estimate based on petrol price of \$2.80 per litre and an average distance of 14000 km. Emissions and Energy Economy figures standardised to 3P WLTP.

Stock ID: 17864



Royale Cars & Motorcycles | Phone 07 846 6622 | Email sales@royalecars.co.nz
860 Te Rapa Road, Pukete, Hamilton 3288, New Zealand
www.royalecars.co.nz



4.78 | 113 reviews