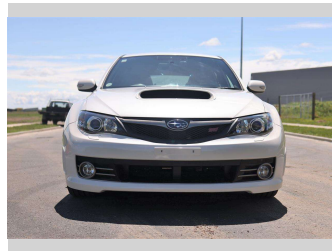
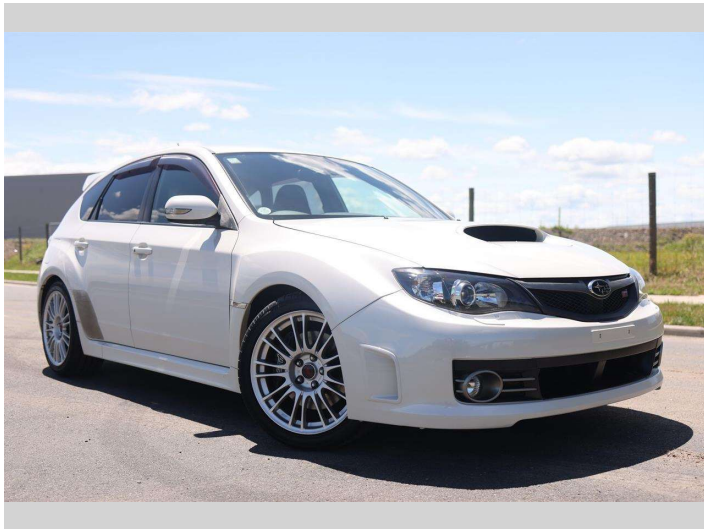



2009 Subaru Impreza WRX STi



Purchase Price **\$19,997**
Includes GST, Registration & Licensing

Finance may be available on this vehicle. Ask one of our friendly staff for more information.



Gain peace of mind with Mechanical Breakdown Insurance. **Ask us how.**



Top features

- » ABS Brakes
- » Air Bag(s)
- » Air Conditioning
- » All Electrics
- » Alloys
- » Digital Display
- » Electric Aerial
- » Electric Mirrors
- » Electric Mirrors
- » Electric Windows
- » Paddle Shift
- » Power Steering
- » Rear Wiper

Body Style
5 door, Hatchback

Odometer
104,267 km

Engine
2500 cc

Fuel Type
Petrol

Transmission
Auto

Wheels
-

VIN
7AT0GF09X22004160

Interior
Slate

Safety



Based on 2023 UCSR rating for 07-11 models

Reg No.
-

Ext Colour
White

History
Ex-Overseas

Seats
5 seats

CO2 Emissions
★☆☆☆☆
275 grams/km

Energy Economy
★☆☆☆☆

Annual fuel cost of \$4,630
11.8L per 100km

Cost per year is an estimate based on petrol price of \$2.80 per litre and an average distance of 14000 km. Emissions and Energy Economy figures standardised to 3P WLTP.

Stock ID: 16917



Royale Cars & Motorcycles | Phone 07 846 6622 | Email sales@royalecars.co.nz
860 Te Rapa Road, Pukete, Hamilton 3288, New Zealand
www.royalecars.co.nz

