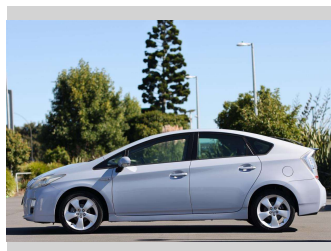
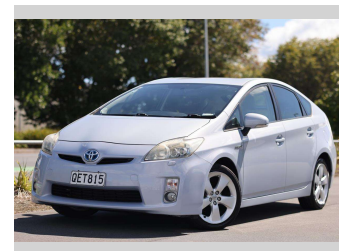
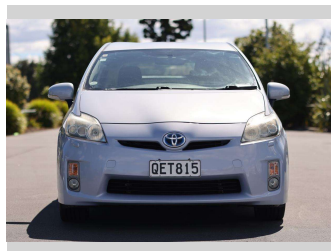
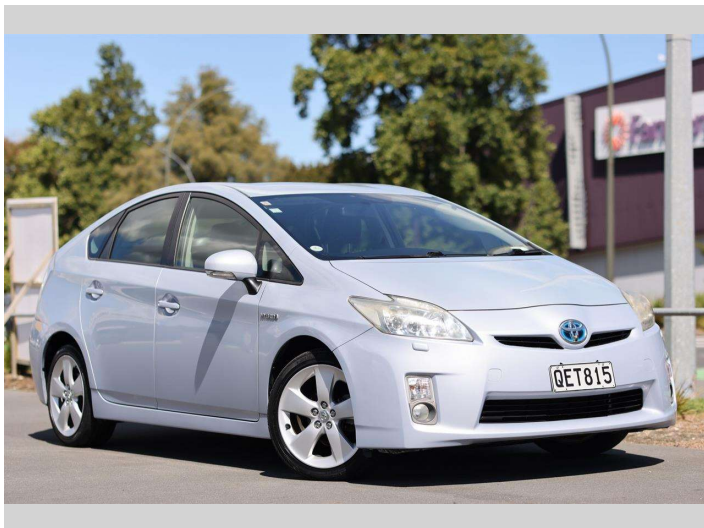


2010 Toyota Prius



Purchase Price

\$10,997

Includes GST, Registration & Licensing

Finance may be available on this vehicle. Ask one of our friendly staff for more information.

finance
NOW

Gain peace of mind with Mechanical Breakdown Insurance. **Ask us how.**



Top features

None Listed

Body Style

5 door, Hatchback

Odometer

110,950 km

Engine

1800 cc, Hybrid

Fuel Type

Hybrid

Transmission

Auto

Wheels

-

VIN

7AT0H637X22112873

Interior

Beige, Leather

Safety



Based on 2023 UCSR rating for 09-16 models

Reg No.

QET815

Ext Colour

Grey

History

-

Seats

5 seats, Fabric

CO2 Emissions

★★★★☆

98 grams/km

Energy Economy

★★★★☆☆

**Annual fuel cost of \$1,650
4.2L per 100km**

Cost per year is an estimate based on petrol price of \$2.80 per litre and an average distance of 14000 km. Emissions and Energy Economy figures standardised to 3P WLTP.

Stock ID: 22777



Royale Cars & Motorcycles | Phone 07 846 6622 | Email sales@royalecars.co.nz
860 Te Rapa Road, Pukete, Hamilton 3288, New Zealand
www.royalecars.co.nz



★★★★★
4.78 | 113 reviews