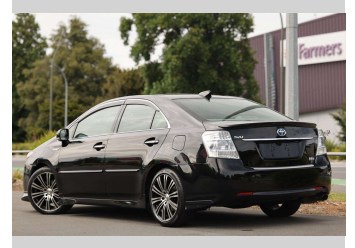
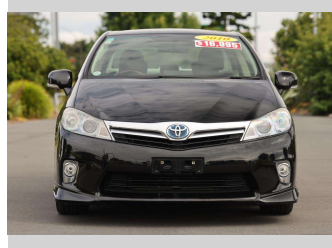
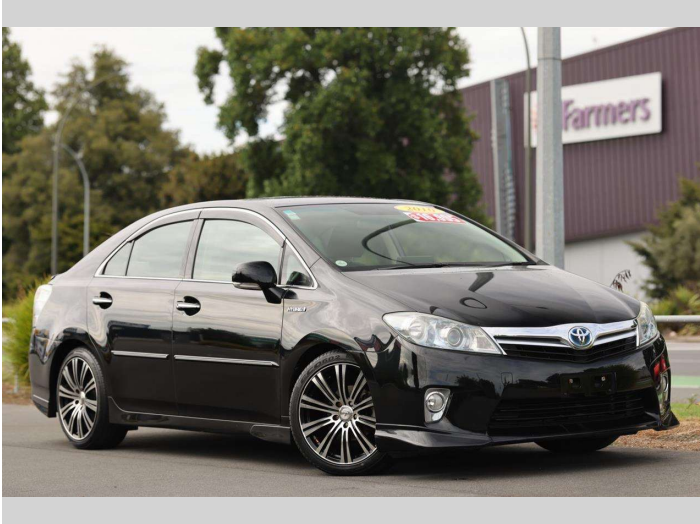


2010 Toyota SAI



Purchase Price

\$16,997

Includes GST
Excludes on-road costs of \$350

Finance may be available on this vehicle. Ask one of our friendly staff for more information.

finance
NOW

Gain peace of mind with Mechanical Breakdown Insurance. **Ask us how.**



Top features

- » ABS Brakes
- » All Electrics
- » Alloys
- » Body Kit
- » Electric Windows
- » Power Steering
- » Spoiler
- » Traction Control

Body Style

5 door, Sedan

Odometer

115,658 km

Engine

2400 cc, Hybrid

Fuel Type

Petrol

Transmission

Auto, 2WD

Wheels

-

VIN

7AT0H661X24033909

Interior

Burgundy, Slate

Safety



Based on 2023 VSRR rating

Reg No.

-

Ext Colour

Black

History

-

Seats

5 seats, Cloth

CO2 Emissions

★★★★☆

126 grams/km

Energy Economy

★★★★☆☆

Annual fuel cost of \$2,120

5.4L per 100km

Cost per year is an estimate based on petrol price of \$2.80 per litre and an average distance of 14000 km. Emissions and Energy Economy figures standardised to 3P WLTP.

Stock ID: 17942



Royale Cars & Motorcycles | Phone 07 846 6622 | Email sales@royalecars.co.nz
860 Te Rapa Road, Pukete, Hamilton 3288, New Zealand
www.royalecars.co.nz



★★★★★
4.78 | 113 reviews