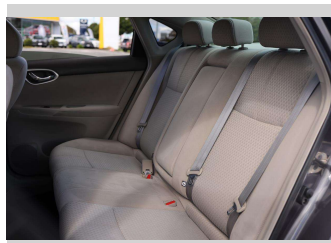
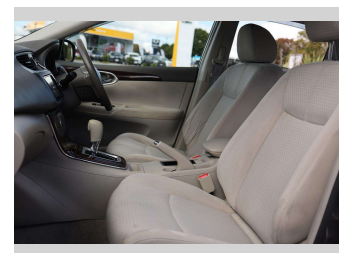
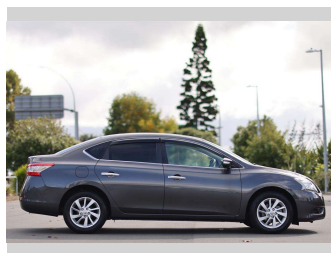



2012 Nissan Sylphy



Purchase Price **\$13,997**

Includes GST
Excludes on-road costs of \$350

Finance may be available on this vehicle. Ask one of our friendly staff for more information.



Gain peace of mind with Mechanical Breakdown Insurance. **Ask us how.**



Top features

- » All Electrics

Body Style
5 door, Sedan

Odometer
64,713 km

Engine
1800 cc, Internal Combustion

Fuel Type
Petrol


Transmission
Auto

Wheels
-

VIN
-

Interior
Beige, Leather

Safety



Based on 2023 VSRR rating

Reg No.
-

Ext Colour
Grey

History
-

Seats
5 seats, Fabric

CO2 Emissions
★★★★☆
169 grams/km


Energy Economy
★★☆☆☆
Annual fuel cost of \$2,820
7.2L per 100km

Cost per year is an estimate based on petrol price of \$2.80 per litre and an average distance of 14000 km. Emissions and Energy Economy figures standardised to 3P WLTP.

Stock ID: 17719



Royale Cars & Motorcycles | Phone 07 846 6622 | Email sales@royalecars.co.nz
860 Te Rapa Road, Pukete, Hamilton 3288, New Zealand
www.royalecars.co.nz



★★★★★
4.78 | 113 reviews