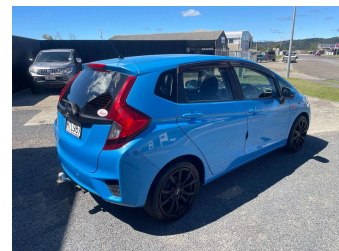
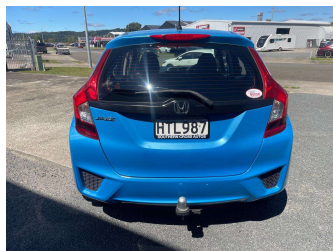




2015 Honda Jazz S 1.3P/CVT/HA/5DR/5S



Purchase Price **\$11,990**
Includes GST, Registration & Licensing

Indicative repayments
\$79.57 per week*
Based on a 208 week term & no deposit.
Total repayments (208) = **\$16,551.34**



peace of mind motoring 

Top features

- » 16 valve DOHC Engine d...
- » 2 KEY'S
- » 5 Seats
- » 6 Air bags
- » ABS
- » ABS Braking w/ EBD
- » Air Conditioning
- » Alarm
- » Alloys
- » AUX
- » Bluetooth
- » Body Kit (Factory)
- » Brake Assist
- » Brake Assist
- » Cam Chain Cam type
- » Car Alarm
- » Central Locking
- » Central Locking

Body Style
5 door, Hatch

Odometer
97,352 km

Engine
1317 cc, Internal Combustion

Fuel Type
Petrol

Transmission
CVT, Front Wheel

Wheels
-

VIN
JHMGK3830FX200271

Interior
Black, Cloth

Safety 

Based on 2025 UCSR rating for 14-20 models

Reg No.
HTL987

Ext Colour
Blue

History
NZ New, 2 owners

Seats
5 seats, Cloth

CO2 Emissions
★★★★☆
143 grams/km

Energy Economy
★★★★☆☆

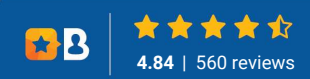
Annual fuel cost of \$2,350
6L per 100km

Cost per year is an estimate based on petrol price of \$2.80 per litre and an average distance of 14000 km. Emissions and Energy Economy figures standardised to 3P WLTP.

Stock ID: 2672



Southern Cross Autos | Phone 07 308 0265 | Email clive@southerncrossautos.co.nz
7 Gateway Drive, Coastlands, WHAKATANE 3120, New Zealand
www.southerncrossautos.co.nz



4.84 | 560 reviews

* Southern Cross Autos is not a lender nor a financial adviser. Any amounts displayed should not be seen as an offer of finance or taken as financial advice. The interest rate, fees and loan term used in this calculation may not actually represent those available from lenders. Actual interest rates, fees and loan terms will vary per lender and are typically based on an assessment of your credit risk and responsible lending criteria. Any repayment amounts displayed are indicative only and have been calculated using several other indicative inputs. The interest rate used in this calculation is an arbitrary 13.80%, however exact interest rates vary per lender. The term of the loan used in this calculation is 208 week. Exact terms available vary per lender although options typically include 6, 12, 18, 24, 36, 48 and 60 months. This calculation also includes two typical mandatory fees charged by lenders. These are an account admin fee of \$8.00 per month (other payment frequencies may be available) and a one-off establishment fee of \$422.00. Typically, this fee can be paid upfront or, as in this calculation, be capitalised over the contract term, ie. included in the loan amount. These fees can vary per lender and other non-mandatory fees and charges may also apply. The total amount of repayments has been calculated by multiplying 208 weekly repayments (based on a 208 week term) by the weekly repayment amount of \$79.57 which equals \$16,551.34. This calculator does not consider any of your own personal circumstances and we strongly suggest you seek budgeting advice prior to committing to any loan contract. Responsible lending criteria and lender terms and conditions will likely apply to any finalised loan contract. Proof of security and/or vehicle insurance may also be required before proceeding.